



9 St. Peters Avenue

Formby, L37 1NE

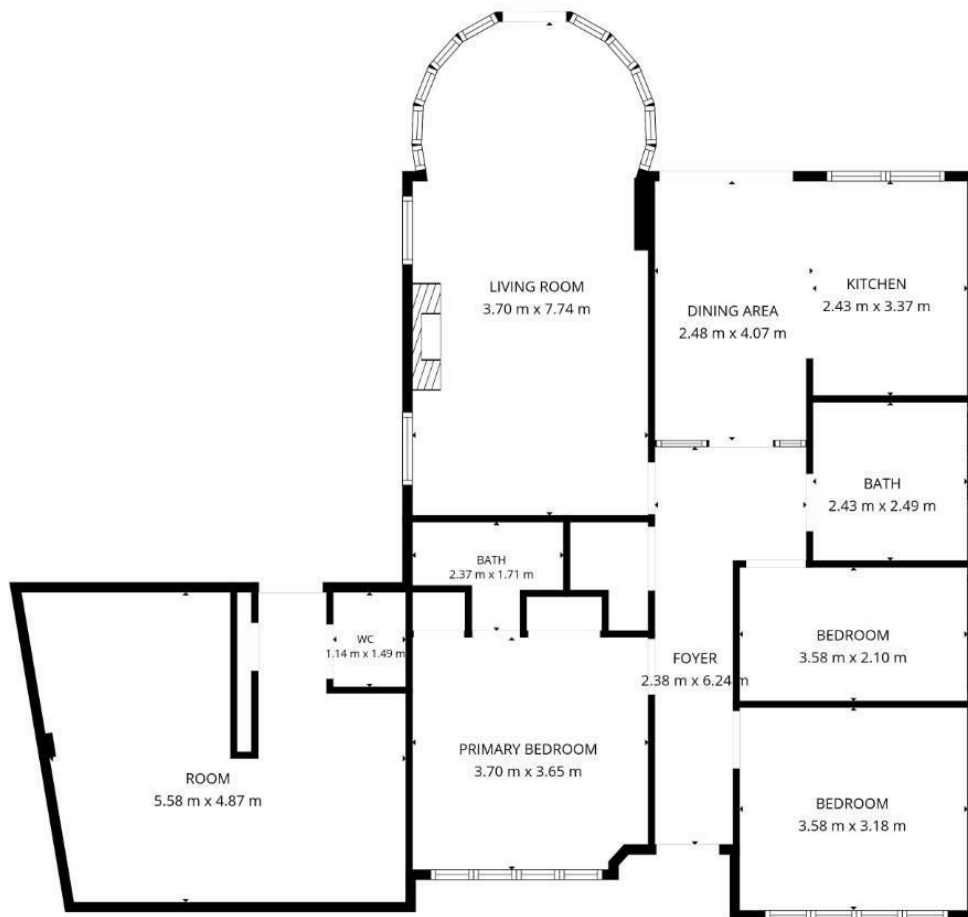
Offers in excess of £625,000



9 St. Peters Avenue

Formby, L37 1NE

Offers in excess of £625,000



TOTAL: 130 m2

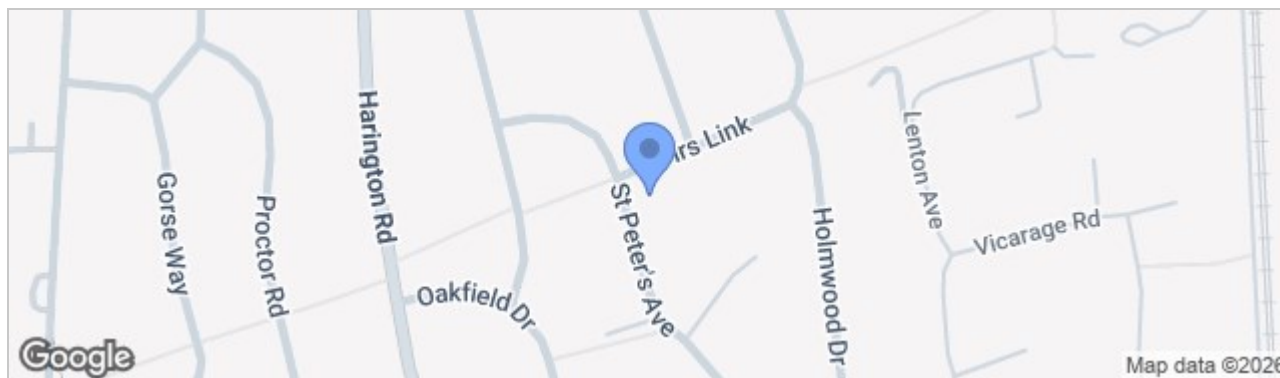
Ground floor: 130 m2

EXCLUDED AREAS: UNDEFINED: 1 m2, WALLS: 9 m2

FLOOR PLAN CREATED BY CUBICASA APP. MEASUREMENTS DEEMED HIGHLY RELIABLE BUT NOT GUARANTEED.



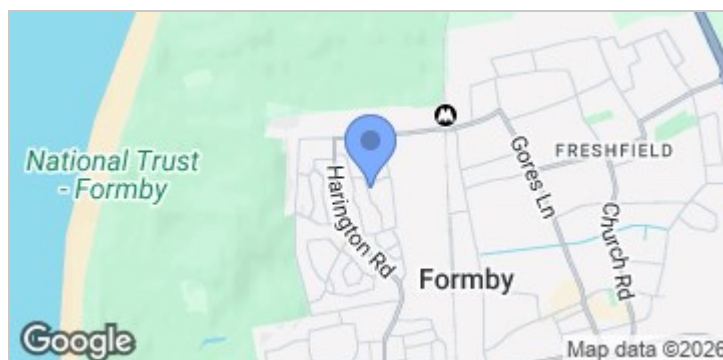
Road Map



Hybrid Map



Terrain Map



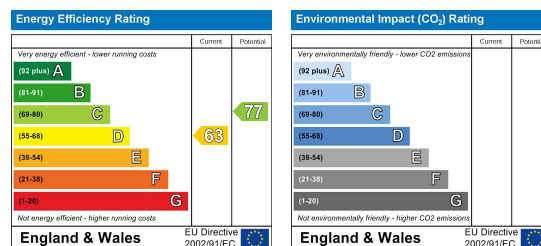
- **FULLY RENOVATED THREE BEDROOM, TWO BATHROOM DETACHED BUNGALOW IN THE HEART OF FORMBY**
- **PRIME LOCATION CLOSE TO FORMBY COASTLINE, PINE WOODS AND AMENITIES**
- **LARGE WRAP-AROUND PLOT WITH BEAUTIFUL ESTABLISHED GARDENS TO THE FRONT, SIDE AND REAR**
- **STUNNING PRINCIPAL BEDROOM WITH STYLISH EN-SUITE SHOWER ROOM AND LUXURY FOUR-PIECE FAMILY BATHROOM**
- **BRIGHT AND SPACIOUS LOUNGE FEATURING A STRIKING FLOOR-TO-CEILING CURVED BAY WINDOW OVERLOOKING THE GARDENS**
- **EXTENSIVE OFF-ROAD PARKING, GATED SIDE DRIVEWAY AND VERSATILE CONVERTED STUDIO/GYM/ HOME OFFICE**
- **TENURE FREEHOLD - COUNCIL TAX BAND E**
- **PLANNING GRANTED FOR FRONT, SIDE & REAR EXTENSION**

Viewing

Please contact our Formby Office on 01704827402 if you wish to arrange a viewing appointment for this property or require further information.

These particulars, whilst believed to be accurate are set out as a general outline only for guidance and do not constitute any part of an offer or contract. Intending purchasers should not rely on them as statements of representation of fact, but must satisfy themselves by inspection or otherwise as to their accuracy. No person in this firm's employment has the authority to make or give any representation or warranty in respect of the property.

Energy Efficiency Graph



82 Coronation Road, Crosby, Liverpool L23 5RH

Tel: 0151 909 3003
Email: crosby@abode.group.co.uk
Web: www.abode-group.co.uk

6 Allerton Road, Mossley Hill, Liverpool, L18 1LN

Tel: 0151 601 3003
Email: allerton@abode-group.co.uk
Web: www.abode-group.co.uk

2 Chapel Lane, Formby, Liverpool, L37 4DU

Tel: 01704 827 402
Email: formby@abode-group.co.uk
Web: www.abode-group.co.uk